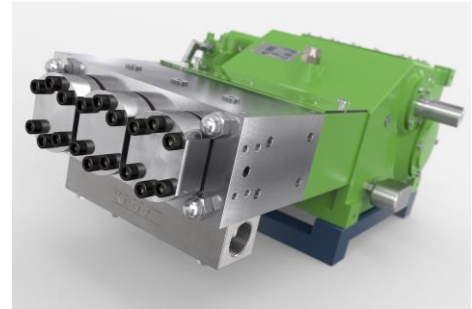


Triplex Plunger Pump K 18000 - 3G

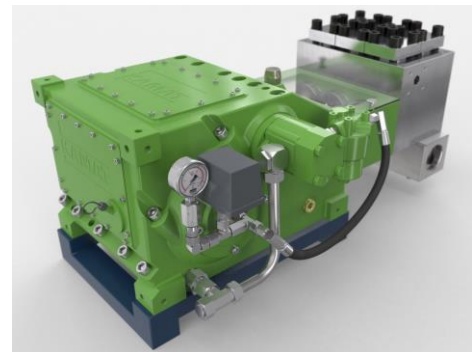
P 27-1

20.05.2015

The high performance K 18000 fulfills a wide range of applications such as hydraulic, seawater, glycol, methanol, oils and industrial cleaning. This model operates in continuous duty service with forced lubrication. Constructed in the classic KAMAT modular component system facilitates simplified adaptation to different operating requirements with component or head exchanges. The rugged design utilizes relatively few component parts, reducing maintenance and improving reliability.



- Flow rate based upon 100% volumetric efficiency and 20°C ambient temperature
- Minimum inlet pressure depends on fluid medium
- Speed range 10-100% depending on rod force
- Gear dynamically balanced
- Gear with force-fed lubrication (> 130 kW with oil cooler)
- Standard gear ratios
 $i = 3,00 - 3,14 - 3,39 - 3,76 - 4,13 - 4,50 - 4,93$
- API 674 or ATEX versions available



| n_{nom} max. = 500 1/min | | p max. bar @ kW | | | | Head type | | |
|----------------------------|-------|-----------------|--------|--------|--------|-----------|---|----|
| Type | l/min | 110 kW | 130 kW | 160 kW | 180 kW | A | M | MC |
| K 18014 - 3G | 24 | 2400 | 2890 | 3500 | ----- | 1 | | |
| K 18016 - 3G | 32 | 1840 | 2210 | 2680 | 3010 | 1 | | |
| K 18018 - 3G | 40 | 1460 | 1740 | 2120 | 2360 | 1 | | |
| K 18020 - 3G | 49 | 1190 | 1420 | 1715 | 1910 | 1 | | |
| K 18022 - 3G | 60 | 970 | 1170 | 1420 | 1500 | 2 | | |
| K 18024 - 3G | 71 | 820 | 980 | 1190 | 1325 | 2 | | |
| K 18026 - 3G | 84 | 690 | 840 | 1020 | 1130 | 2 | | |
| K 18028 - 3G | 97 | 600 | 720 | 875 | 975 | 2 | | H |
| K 18030 - 3G | 111 | 525 | 630 | 760 | 850 | 2 | | H |
| K 18032 - 3G | 127 | 460 | 555 | 670 | 750 | 2 | | H |
| K 18036 - 3G | 160 | 365 | 435 | 530 | 590 | 2 | 1 | H |
| K 18040 - 3G | 198 | 295 | 355 | 430 | 475 | | 1 | 1 |
| K 18045 - 3G | 250 | 230 | 280 | 340 | 375 | | 1 | 1 |
| K 18050 - 3G | 309 | 190 | 225 | 275 | 305 | | 1 | 1 |
| K 18055 - 3G | 374 | 155 | 190 | 230 | 250 | | 1 | 1 |
| K 18060 - 3G | 445 | 130 | 160 | 190 | 210 | | 1 | 1 |
| K 18065 - 3G | 522 | 110 | 135 | 160 | 180 | | | 1 |

API 674 = max. 340 1/min

= Ultra High Pressure UHP

Dimensional Drawing K 18000 - 3G ~ 440 kg P 27-2
01.05.2017

