

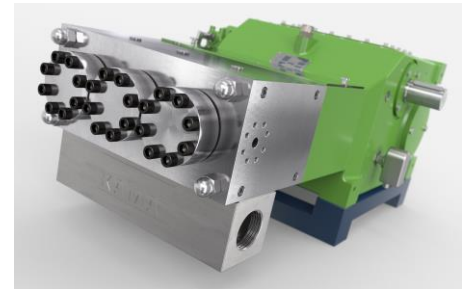
## Triplex Plunger Pump K 25000 – 3G

P 35-1

01.01.2017

Supplied in hundreds of hydraulic systems world wide, the K 25000 provides reliability and versatility. At 250 kW that features a gearbox with forced lubrication, as well as an optional oil cooler, this high quality pump represents the perfect solution for applications in process technology, mining, hydraulic and jetting applications with 24/7 operation. A simple pump head exchange allows the modularly designed unit to accommodate different operating pressures and pumped media. This high-pressure pump can pump media with a viscosity of up to 2,000 mPas (millipascal second) and a fluid temperature of up to 200°C.

- Flow rate based upon 100% volumetric efficiency and 20°C ambient temperature
- Minimum inlet pressure depends on fluid medium
- Speed range 10-100% depending on rod force
- Gear dynamically balanced
- Gear with force-fed lubrication (> 160 kW with oil cooler)
- Standard gear ratios  $i = 3,33 - 3,50 - 4,04 - 4,62 - 5,44$
- Viscosity up to 2,000 centipoise and temperatures up to 200°C
- API 674 and ATEX versions available



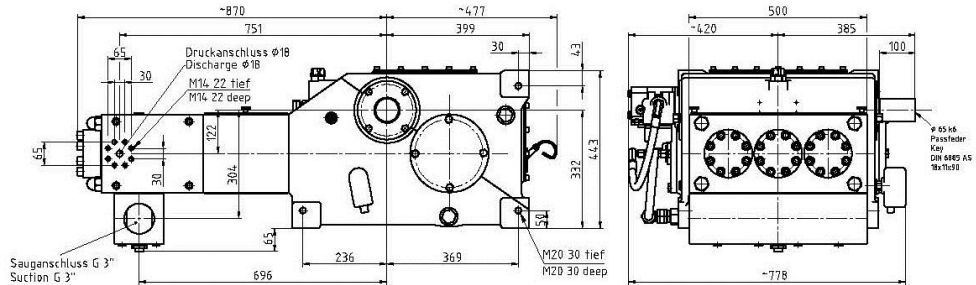
$n_{nom} = 450 \text{ 1/min}$		p max. bar @ kW				Head type		
Type	l/min	132 kW	160 kW	200 kW	250 kW	A	M	MC
K 25018 – 3G	41	1700	2060	2570	3200	1		
K 25020 – 3G	51	1370	1670	2080	2500	1		
K 25022 – 3G	62	1135	1380	1720	2130	1		
K 25024 – 3G	73	955	1160	1450	1800	1		
K 25026 – 3G	86	815	990	1235	1500	1		
K 25028 – 3G	100	700	850	1060	1315	1		
K 25030 – 3G	114	610	740	925	1145	1		
K 25032 – 3G	130	535	650	815	1010	1		H
K 25036 – 3G	165	425	515	645	800	1		H
K 25040 – 3G	203	345	415	520	645	1		H
K 25045 – 3G	258	270	330	410	510	1	1	H
K 25050 – 3G	318	220	265	335	415	1	1	H
K 25055 – 3G	385	180	220	275	340		1	1
K 25060 – 3G	458	155	185	230	285		1	1
K 25065 – 3G	537	130	160	200	245		1	1
K 25070 – 3G	623	110	135	170	210			1
K 25075 – 3G	715	100	120	150	185			1
K 25080 – 3G	814	85	100	130	160			1
K 25085 – 3G	919	75	90	115	145			1
K 25090 – 3G	1030	65	80	100	125			1
K 25095 – 3G	1148	60	75	90	115			1

API 674 = max. 320 1/min

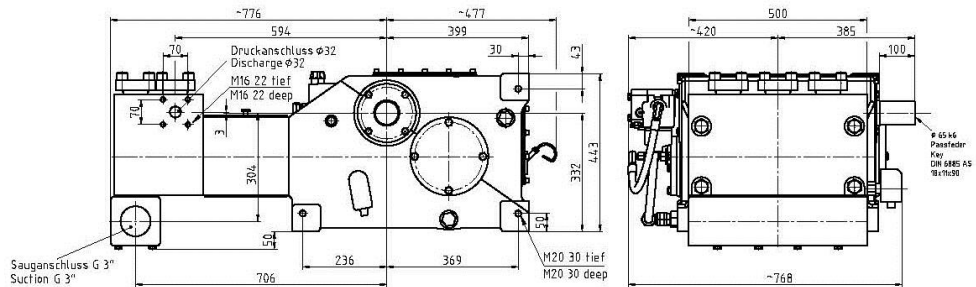
= Ultra High Pressure UHP

Dimensional Drawing K 25000 – 3G ~ 955 kg P 35-2  
01.05.2017

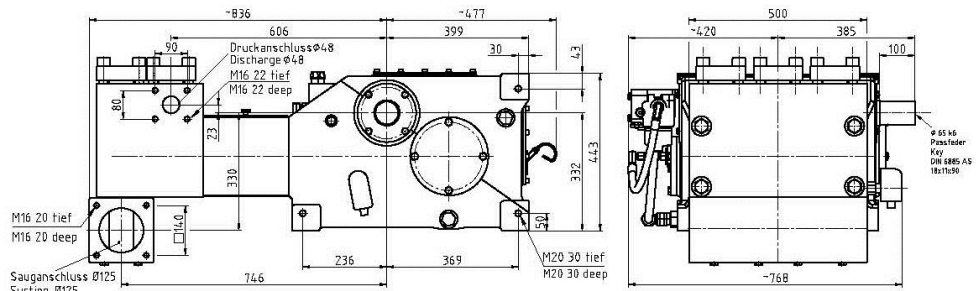
Typ A  
Type A



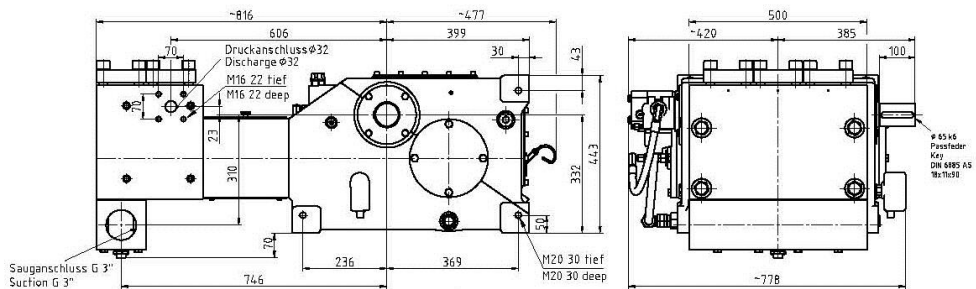
Typ M  
Type M



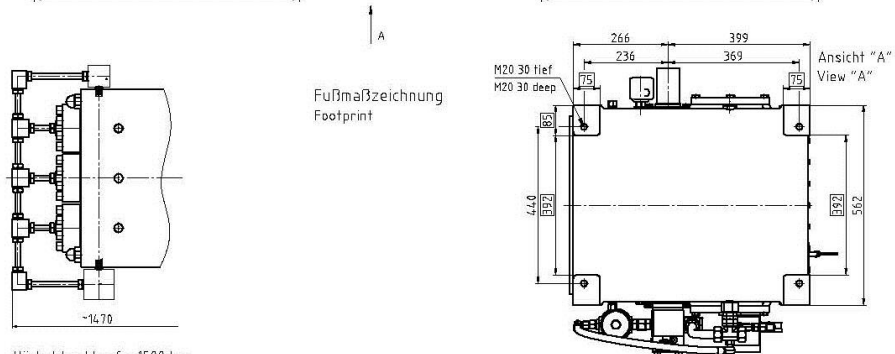
Typ MC  
Type MC



Typ MCH  
Type MCH



Typ A  
Type A  
 $\geq 1500$  bar



Höchstdruckkopf  $\geq 1500$  bar  
High Pressure Head  $\geq 1500$  bar