

Quintuplex Plunger Pump K 50000 - 5G

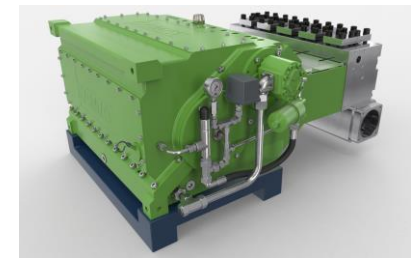
P 54-1

15.10.2016

The K 50000, high-pressure pump serves as the smallest of the five cylinder designs and powerful in operation. Units manufactured to precisely phase discharge strokes and attenuate pulsations. The K 50000 achieves a high performance capability without cavitation and pumps up to 640 l/min without inlet boost pressure. The 500 kW drive power makes this model particularly suited to jetting, hydraulics, mining, and steelworks applications.



- Flow rate based upon 100% volumetric efficiency and 20°C ambient temperature
- Minimum inlet pressure depends on fluid medium
- Speed range 10-100% depending on rod force
- Gear dynamically balanced
- Gear with force-fed lubrication and oil cooling
- Gear ratios $i = 3,30 - 3,95 - 4,66 - 5,63$
- API 674 and ATEX versions available



$n_{nom} = 450 \text{ 1/min}$		p max. bar @ kW				Kopftyp / Head type		
Typ / Type	l/min	315 kW	355 kW	400 kW	530 kW	A	M	MC
K 50018 - 5G	69	2430	2740	3085	3500	1		
K 50020 - 5G	85	1965	2220	2500	3245	1		
K 50022 - 5G	103	1625	1830	2065	2685	1		
K 50024 - 5G	122	1365	1540	1735	2255	1		
K 50026 - 5G	143	1165	1310	1480	1920	1		
K 50028 - 5G	166	1005	1130	1275	1655	1		
K 50030 - 5G	191	875	985	1110	1445	2		
K 50032 - 5G	217	765	865	975	1270	2		
K 50036 - 5G	275	605	685	770	1000	2		H
K 50040 - 5G	339	490	555	625	810	2		H
K 50045 - 5G	429	385	435	490	640	2		H
K 50050 - 5G	530	315	355	400	520	2	1	H
K 50055 - 5G	641	260	290	330	430		1	1
K 50060 - 5G	763	215	245	275	360		1	1
K 50065 - 5G	895	185	210	235	305		1	1
K 50070 - 5G	1039	160	180	200	265			1
K 50075 - 5G	1192	140	155	175	230			2
K 50080 - 5G	1356	120	135	155	200			2
K 50085 - 5G	1531	105	120	135	180			2
K 50090 - 5G	1717	95	110	120	160			2
K 50095 - 5G	1913	85	100	110	145			2

API 674 = max. 385 1/min

= Ultra High Pressure UHP

Dimensional Drawing K 50000-5G

~ 2200 kg

P 54-2

01.05.2017

